

# Premier 48-W

Wireless control panel with **RICOCHET** technology



## The Power of Choice

More speed. More flexibility. More choice. The **Premier 48-W** is a wireless control panel suitable for a wide variety of security applications. Combining class-leading Premier Series control panel architecture with **RICOCHET** mesh network wireless technology, the **Premier 48-W** is compatible with Texecom's entire range of peripheral devices.



- Suitable for premium residential and small commercial applications
- Expandable to 48 zones with 4 partition areas
- Accepts up to 32 **RICOCHET** enabled wireless devices - No wireless expander required

 **RICOCHET**  
mesh technology

**Texecom**  
Designed to Perform

## Applications



### Residential

**RICOCHET** enabled wireless devices protect residential properties with ease. The Premier 48-W features a new Commission Mode\* setup procedure which makes the installation process simple, reliable and fast.

\*World-wide patents pending



### Commercial

The **RICOCHET** wireless technology has been invented to provide reliable wireless communications in commercial environments. The Premier 48-W features Signal Security™ and self-healing functions delivering unparalleled communications reliability.

## Wireless Technology



### Unrivalled Performance

**RICOCHET** enabled wireless devices receive and repeat wireless transmissions from other devices. The size, scalability and range of the entire system are extended as wireless signalling is no longer limited by point-to-point communications.

## Scalability

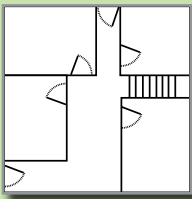
Max. number of Keypads: 4



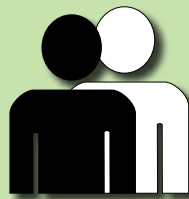
Max. number of Zones: 48



Max. number of Areas: 4



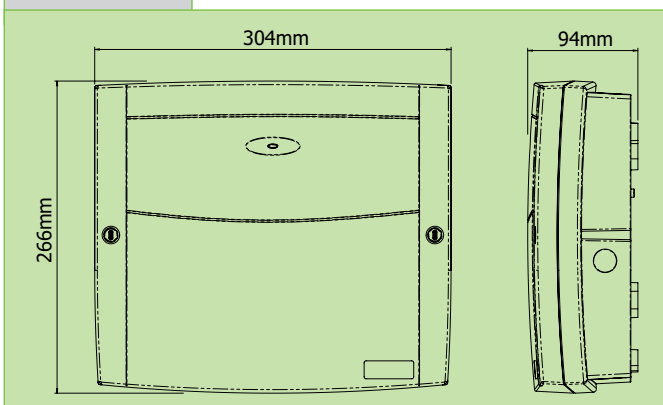
Max. number of User Codes: 25



## Key Features

Maximum Number Of Zones	48
Maximum Number Of Wireless Zones	32
Number Of Wired Zones (Onboard)	0
8 Zone Expanders (Wired)	3
Event Log Time & Date Stamped	500
SMS Text Messaging	•
Plug On Digimodem/ISDN Digimodem	•
Single Pole Zone Wiring	•
Double Pole Wiring	•
End Of Line Wiring	•
Part Sets	3 PER AREA
Programmable Outputs (Control Panel)	10
Multi Format Communication Protocols	•
Remote & Local Upload/Download	•
Printer Output	•
Conventional Fire Detector Compatible	•
EN 50131-1	G2
EN 50131-3	G2

## Dimensions



## Standards

Alarm Systems:	EN 50131-2-2, EN 50131-5-3, EN 50131-1, PD 6662, Grade 2 Class II
EMC:	EN 50130-4:1995: A1: A2 ETSI EN 301 489-03 V1.4.1
R&TTE:	ETSI EN 300-220 (V2.1.1)
Environmental:	EN 50130-5

See the full range of Ricochet products at [www.texecom.com/ricochet](http://www.texecom.com/ricochet)



Certificate Number: FM 35285



A20110718