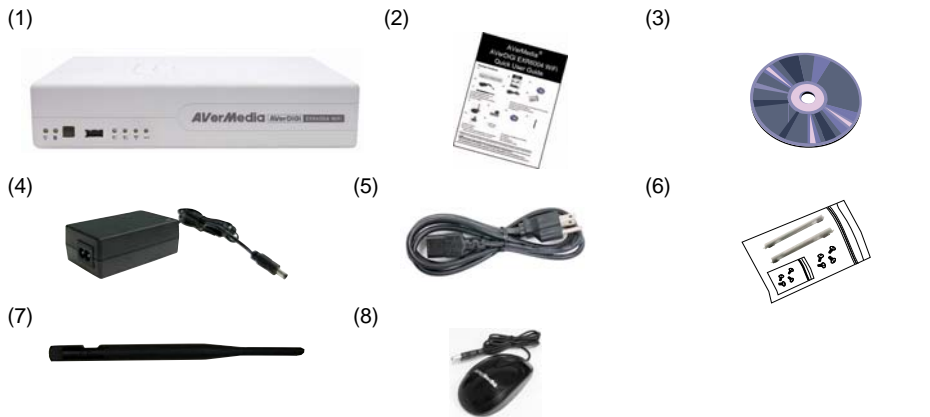
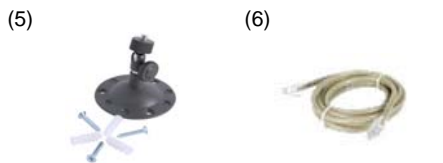
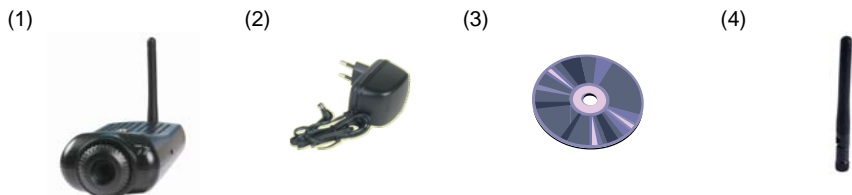


AVerMedia® AVerDiGi EXR6004 WiFi Quick Installation Guide

Package Contents



- (1) AVerDiGi EXR6004 WiFi unit
- (2) Quick Installation Guide
- (3) Software CD (Manual is included)
- (4) Power Adaptor
- (5) Power Cord (*The power cord may vary 64 according to the local electricity system.)
- (6) HDD holder (including 8 screws)
- (7) Antenna x 2
- (8) AVerMedia USB optical mouse



- (1) Wireless IP camera unit
- (2) Power Adapter (The power cord varies depending on the standard power outlet of the country where it is sold).
- (3) Software CD (Manual is included)
- (4) Antenna
- (5) Camera Stand
- (6) RJ-45 Ethernet Cable

i The unit of the Wireless IP camera (1 or 4) in package may vary that depends on the model of DVR user has purchased.

i If there is any damage, shortage or inappropriate item in the package contents, please contact with local dealer

i **SPECIFICATIONS ARE SUBJECT TO CHANGE WITHOUT PRIOR NOTICE**
THE INFORMATION CONTAINED HEREIN IS TO BE CONSIDERED FOR REFERENCE ONLY

Hardware Installation

A. Install the hard disk



The DVR unit may include hard disk that depends on the model user has purchased. If the model user has purchased is included hard disk, use doesn't need to install the hard disk by yourself.

Follow the steps to install the hard disk:

1. Loosen all screws



2. Push the cover backward and lift



3. Secure the brackets on the hard disk



4. Connect the end of the SATA cable and the power connector to the hard disk




5. Secure the hard disk inside the unit then place unit cover



6. Push the cover forward and secure the cover

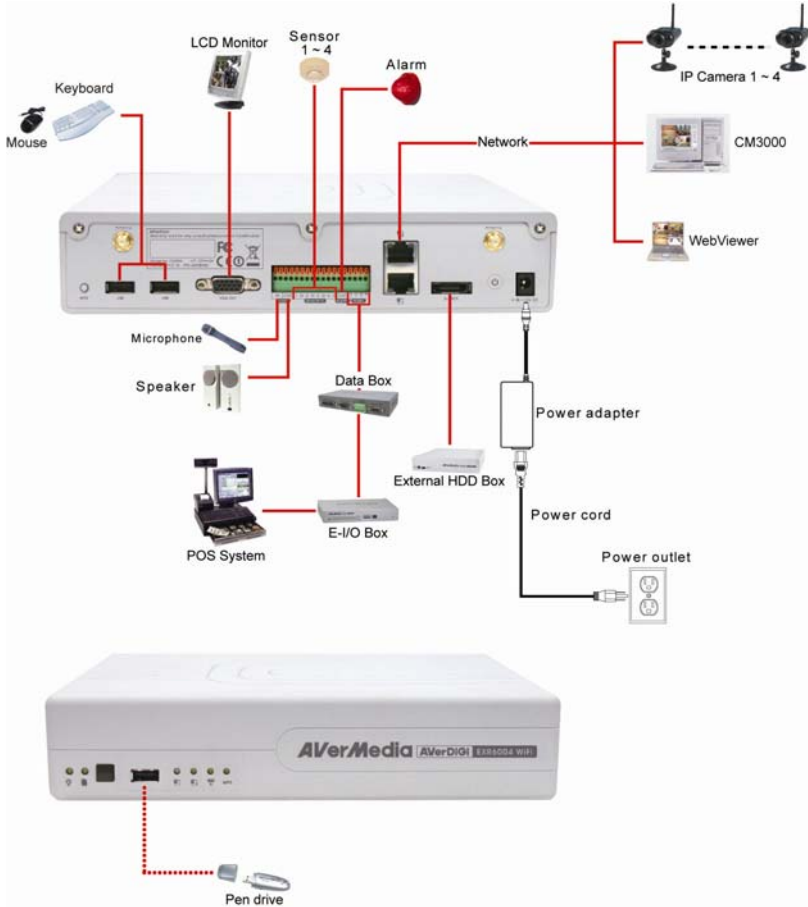


7. You may now connect all the cables. When the power is connected, the Power LED light  turns on

B. Device Connection

The back panel of the DVR unit, user can connect the 4 sensor devices, 1 alarm device, audio input/output device and an external HDD storage device. Through the Gigabit LAN ports can connect with the IP cameras and allows user to remote access the DVR server. The USB ports can connect the mouse and keyboard for more easily to operate DVR server.

Follow the illustration below to make the connection:



WARNING

TO REDUCE RISK OF FIRE OR ELECTRIC SHOCK. DO NOT EXPOSE THIS APPLIANCE TO RAIN OR MOISTURE

WARRANTY VOID FOR ANY UNAUTHORIZED PRODUCT MODIFICATION

For the First Time Using the DVR Unit

STEP 1: To Connect with the IP Camera

1. Please make sure the DVR unit and IP camera are in communication area.
2. Press and hold the **WPS** button of the DVR unit. To release button until hear the beep sound. The **Wireless indicator** that is located at front panel of the DVR unit will light up.



3. Press and hold the **WPS** button of IP camera until the **power LED** turns off (about 5 seconds), and then, the LED will start to blink at every 2 seconds. And then, wait about 120 seconds for IP camera to communicate with the DVR unit.



4. If the DVR unit and IP camera has successful to communicate. The Wireless status indicator that is located at front panel of the DVR unit will start flashing.



5. And, the surveillance monitor should see the live video from IP camera.



Preview UI



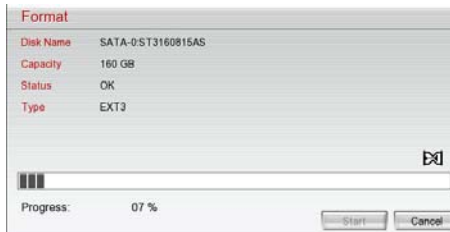
STEP 2: To Format the Hard Disk

The hard disk must be formatted before can be used to record the video.

1. Click **Setup** and enter the password.
2. Click **System**. Click **Switch to Advance Setup** if the setup mode is in **Basic Setup** mode.



3. Click **Add** to call out **Disk Management** windows. Select the hard disk and click **Format**.
4. And then, click **Start** to format the selected hard disk.

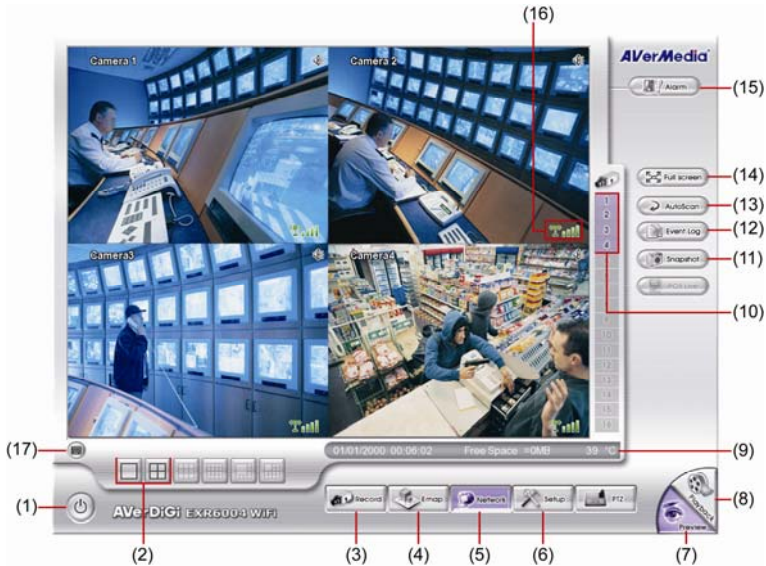


5. When the formatting is done, click **Cancel** to exit.
6. Now, user can click **Record** button to start recording.



Preview UI

Familiarizing the Buttons in Preview Mode

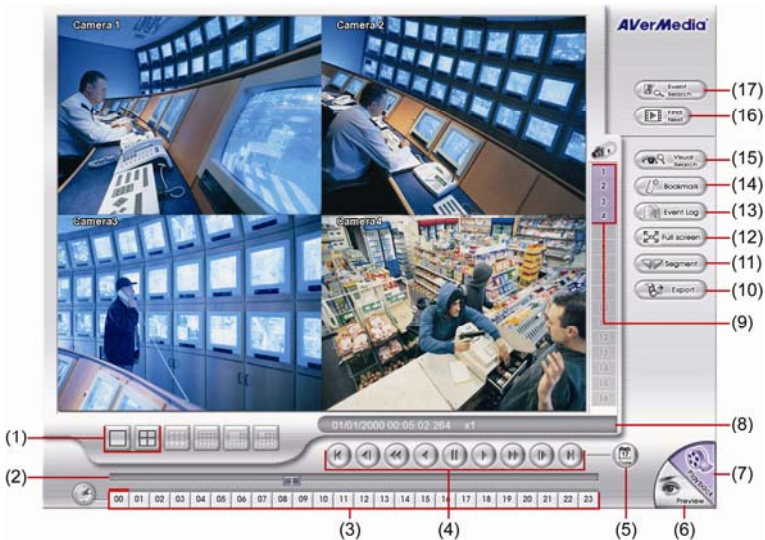


Name	Function
(1) Logout	<ul style="list-style-type: none"> - Reboot: To restart the DVR system. - Power Off: To shutdown the DVR system. - Login: To login DVR system with different user account. - Cancel: Close the logout dialog box.
(2) Split Screen Mode	Select from 2 different split screen types to view all the camera, or one camera on a single screen.
(3) Record	Start/stop server and client site video recording.
(4) EMap	Display the map in each area, and the location of camera/ sensor/ relay and the warning.
(5) Network	Enable/disable remote system access. This feature allows you to access DVR server from a remote location via internet connection. The default is disabled.
(6) Setup	Configure the system settings.
(7) Preview	Switch to Preview mode. This allows you to view live camera display.
(8) Playback	Switch to Playback mode. This allows you to view the recorded video file.
(9) Status bar	Display the recording date, time and hard disk space of DVR unit.
(10) Camera ID	Show the number of cameras that are being viewed. When you are in single screen mode, click the camera ID number to switch and view other camera.
(11) Snapshot	Capture and save the screen shot in *.jpg format.
(12) Event log	Show the record of activities that take place in the system.
(13) AutoScan	Start/Stop video screen cycle switch.

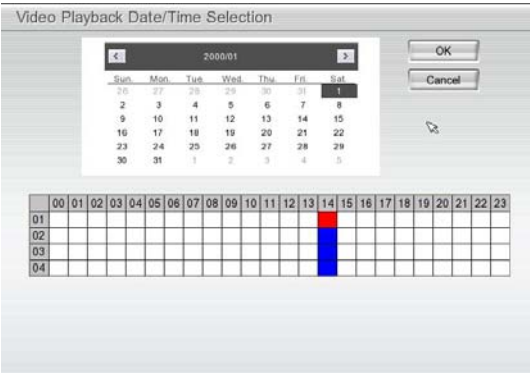

Name	Function
(14) Full screen	View in full screen. To return, press the right button of the mouse or ESC on the keyboard or click the arrow icon. When you switch to full screen in multiple-screen mode, Left click to toggle to only display one of the video in the multiple-screen mode or all.
(15) Alarm	Alert and display warning info.
(16) WiFi Signal	Display the intensity of the WiFi signal
(17) Virtual Keyboard	If the keyboard is not available, you may use the Virtual Keyboard.

Familiarizing the Buttons in Playback Mode

To switch in Playback mode, click **Playback** button at the lower right corner of Preview mode user interface.



Name	Function
(1) Split Screen Mode	Select from 2 different split screen type to playback the recorded video file of all the camera or one camera on a single screen.
(2) Progress bar	Show the progress of the file being played. You may move the bar to seek at any location of the track.
(3) Hour Buttons	Select and click to playback the recorded video file on the specific time frame.
<p>i The Hour buttons represent the time in 24-hour clock. The blue bar on top of the hour button indicates that there is a recorded video file on that period of time. While the red bar indicates that you are currently viewing the recorded video file.</p>	
(4) Playback Control Buttons	<p>Begin: Move at the beginning of the recorded video file.</p> <p>Previous: Go back to the previous frame.</p> <p>Slower: Play the recorded video file at the speed of 1/2X, 1/4X, 1/8X, 1/16X, or 1/32X</p> <p>Rewind: Wind back the recorded video file.</p> <p>Pause: Briefly stop playing the recorded video file.</p> <p>Play: Play the recorded video file.</p> <p>Faster: Play the recorded video file at the speed of 2X, 4X, 8X, 16X or 32X.</p> <p>Next: Go to the next frame.</p> <p>End: Go to the end of the recorded video file.</p>

Name	Function
(5) Date	<p>Select the date on the calendar and the time from 00 to 23 to where to start playing the recorded video file.</p> 
	<p>The numbers from 00 to 23 represent the time in 24-hour clock. The numbers from 01 to 04 represent the camera ID. The blue colored column indicates that there is a recorded video file on that period of time. While the red colored column indicates on where to start playing the recorded video file.</p>
(6) Preview	Switch to Preview mode.
(7) Playback	Switch to Playback mode to view the recorded video file.
(8) Status bar	Display the recorded date, time and play speed.
(9) Camera ID	Show the number of cameras that are being viewed. When you are in single screen mode, click the camera ID number to switch and view other camera.
(10) Export	<p>Export includes Snapshot, Output Video Clip, and Backup function.</p> <ul style="list-style-type: none"> ■ Snapshot: Capture and save the screen shot either in *.jpg format. ■ Output Video Clip: Save the segmented file in *.dvr format to external USB storage device. ■ Backup: Save the playback file to USB device or DVD-ROM disk
(11) Segment	<p>Keep a portion of the recorded video.</p> <ol style="list-style-type: none"> 1. Use the Playback Control buttons or drag the bar on the playback progress bar and pause on where you want to start the cut. Then, click Segment to set the begin mark. 2. Use the Playback Control buttons or drag the bar on the playback progress bar and pause on where you want to end the cut. Then, click Segment to set the end mark. To cancel segmentation or set the segment marks from the start, click Segment button again. 3. Click Export button → Output Video Clip to save the video segment to the USB storage device.
(12) Full screen	<p>View in full screen. To return, press the right button of the mouse or ESC on the keyboard or click the arrow icon.</p> <p>When you switch to full screen in multiple-screen mode, Left click to toggle to only display one of the video in the multiple-screen mode or all.</p>
(13) Event log	Show the record of activities that take place in the system. To filter the records, select and click the option button to only display Event, System, Operation, Network or All.

Name	Function
------	----------

- | | |
|---------------|--|
| (14) Bookmark | <p>Mark a reference point when reviewing the recorded video file to which you may return for later reference.</p> <ol style="list-style-type: none"> 1. Click Bookmark button 2. In the Bookmark dialog box, you may do the following: <ul style="list-style-type: none"> - Add to create the new reference mark in the bookmark list. - Edit to change the mark description. - Delete to remove the selected reference mark in the list. - Delete All to remove all the reference marks in the list. - Exit to close Bookmark dialog box. 3. Select and click one in the bookmark list to review the file. |
|---------------|--|

- | | |
|--------------------|---|
| (15) Visual Search | <p>Search from a specific camera by Date, Hour, Minute, 10 Seconds and Second.</p> <ol style="list-style-type: none"> 1. Click Visual Search. 2. In the Visual Search Setting dialog box, select the Camera number and the date. Then click OK. 3. When a series of frames appear by date, click on the frame to display another series of frames and search by every Hour of that date, every Minutes of that hour, and every Seconds of that minute. <p>Using and to go next and last page of time page. To go back last time selection (hour, minute, or second), click . To close event search, click . Click to select different date of video for visual search.</p> 4. On the time second screen, click the channel and playback button will appear. Click playback button to playback the selected channel video frame. |
|--------------------|---|



- | | |
|-------------------|---|
| (16) Find Next | Search for the next event or changes in the motion detector frame. You can use this when you are using Event Search function. |
| (17) Event Search | Search from the recorded activities that were recorded in event log (i.e., Sensor, Motion, Video Loss). |

**For more information, please refer to the user manual in the software CD. If you still have inquiries, please log on to <http://www.averdigi.com> for troubleshooting