

Using Android system to Access Remote DVR Server

Using the mobile phone that is Android system can connect to remote DVR server through the Internet to view the live video.

OS

Android OS 1.5 and above

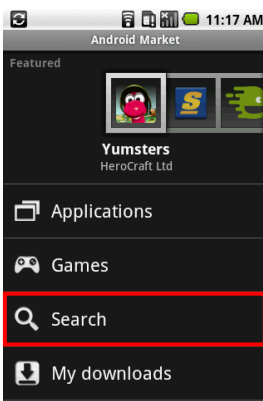
Note

All the illustrations are schematic illustration for user's reference only.

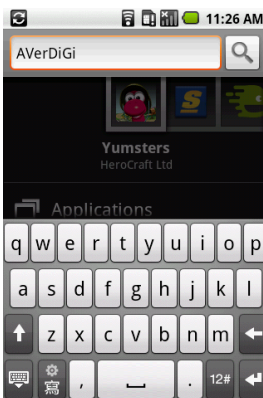
Download the AVerDiGi Android application

To use this feature, it is required to download the AVerDiGi Android application to your mobile phone. Please follow the below description to download the AVerDiGi Android application:

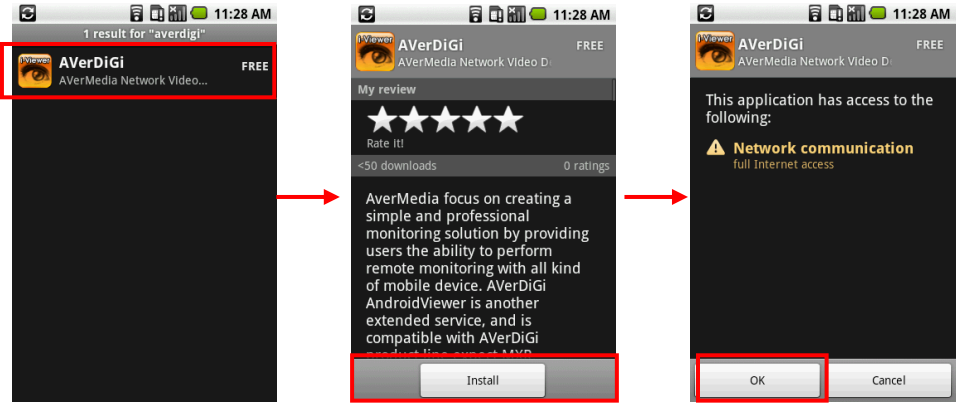
1. Please make sure your mobile phone can access to the internet.
2. On the mobile phone, go to “**Market**” and select “**Search**” function.



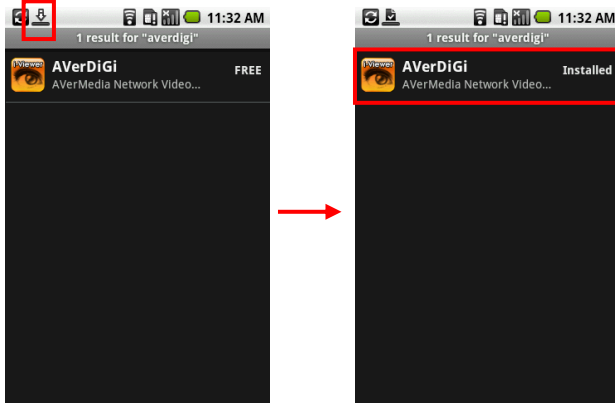
3. Enter search keyword “**AVerDiGi**” to search the AVerDiGi Android application.



4. When AVerDiGi Android application is found, select it and select “Install”. And then, select “OK” at next screen to start installation.

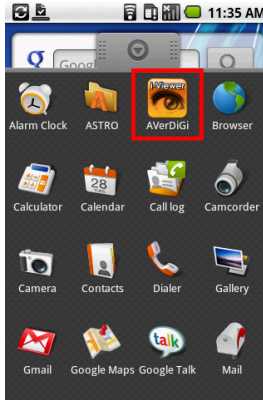


5. After installation completed, the AVerDiGi Android application is installed on your mobile phone and is ready for use.

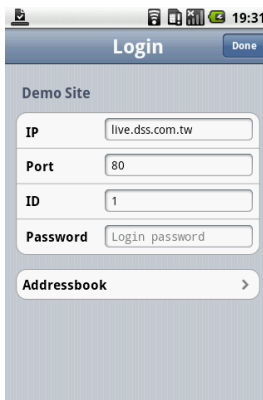


Using the AVerDiGi Android Application

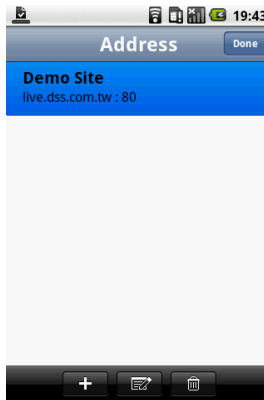
1. To run the AVerDiGi Android application, go to Application menu on your mobile phone and find the AVerDiGi Android application to execute the application.



2. The login screen will display on mobile phone screen. User can enter the IP, port, ID, and Password of DVR that user wants to connect it.
 - **IP:** IP address of the remote DVR server.
 - **Port:** Enter the port number of WebViewer port that user has setup on remote DVR server.
[Note] WebViewer port might also be called "Video port" on some DVR servers.
 - **ID:** The user account to login the remote DVR server.
 - **Password:** The password for login authentication.



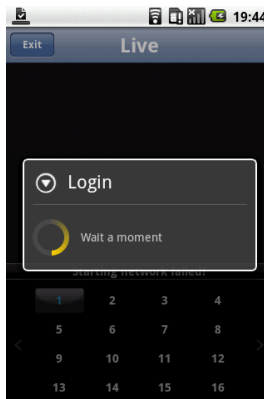
3. User also can select the DVR from Addressbook. To select the DVR server from Addressbook, select **Addressbook** and select the DVR server from list (The selected DVR server will turn into blue highlight).



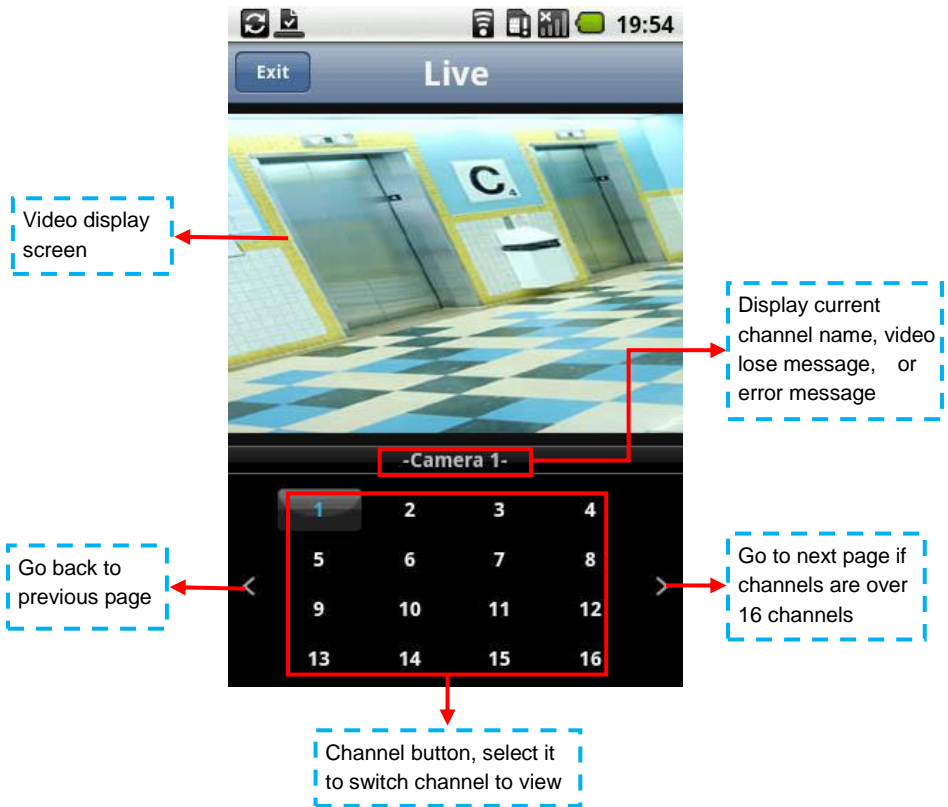
4. After selected DVR server from Addressbook, the screen will switch back to login screen. And, select **Done** to connect with DVR server.



5. Please wait for a while for connecting DVR server.



6. After connected with DVR server, the live view screen will display on the mobile phone screen.

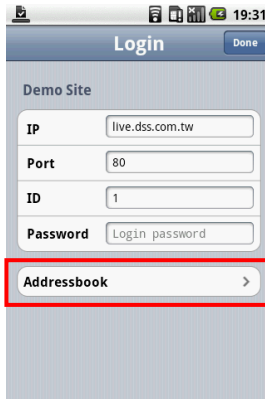


7. To disconnect current connection with DVR server, select **Exit** button.

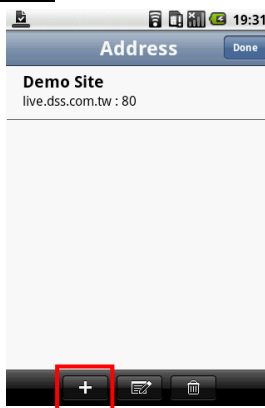
To add DVR server into Addressbook

User can add frequently connect DVR server into Addressbook.

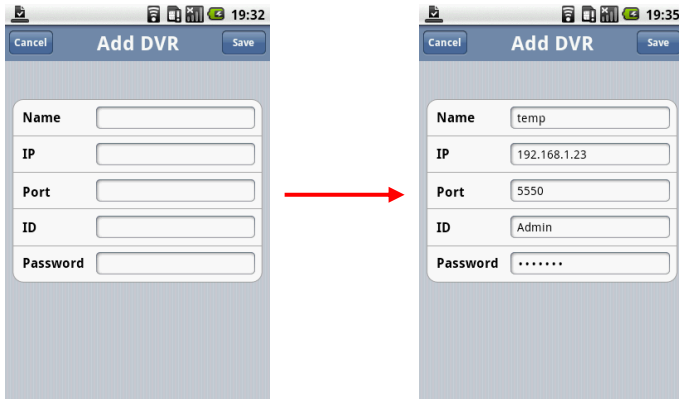
1. In login screen, select **Addressbook**.



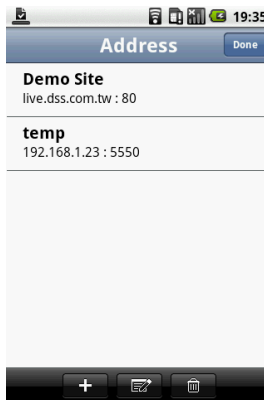
2. In Addressbook screen, select  button to add DVR server.




3. In Add DVR screen, enter the following data:
- **Name:** Give a name to the DVR server for recognizing.
 - **IP:** IP address of the remote DVR server.c
 - **Port:** Enter the port number of WebViewer pot that user has setup on remote DVR server.
[Note] WebViewer port might also be called "Video port" on some DVR servers.
 - **ID:** The user account to login the remote DVR server.
 - **Password:** The password for login authentication.

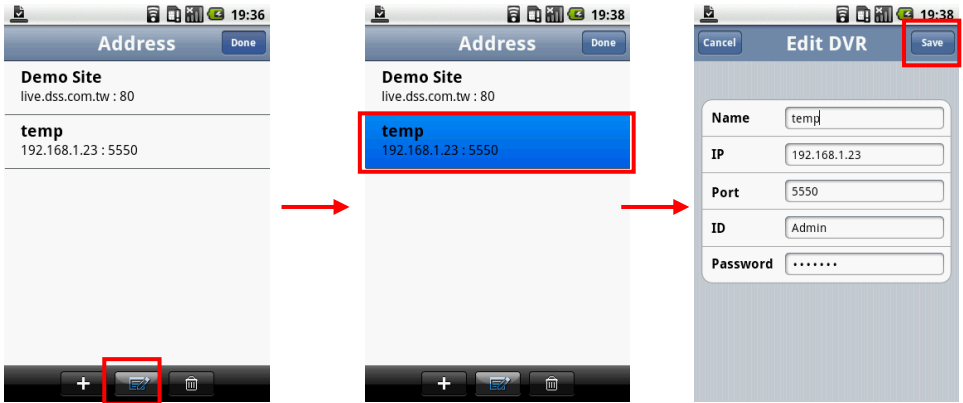



4. And then, select **Save** button to complete the adding. User should see the DVR lists on Addressbook list.



5. To add another DVR server, please repeat above step 2-4.

6. To edit the DVR server, select  (edit) button first, and then, select the DVR server from Addressbook list and select **Done**. After edit, select **Save** to save the changes.



7. To delete the DVR server, select  (delete) button, and then, select the DVR server that user wants to delete and select **ok** to confirm.

